

FSC Precautionary Measures Coronavirus (COVID-19)

Safety is always our top priority. You have our commitment that now, more than ever, this remains true.

Follow the specific **one-way walking route** through our facility shown on the map and indicated with arrows and signs.

- > When entering the building, use the elevator in the central hall to go up.
- > The coffee corner is a 'walk through area', get a cup of coffee and continue your route. Waiting & gathering is not allowed.
- > To reach the briefing rooms on the 2nd floor. Use the stairs on the left side in the coffee corner. Located right before entering the simulator hall and operator desk. One-way route to go up.
- > On the 2nd floor use the stairs in the central hall to go down. Leaving the briefing rooms use the stairs at the end of the hallway, to go down to the simulators or FTD's.
- > The operations department can be reached by the phone on the right side of the operator desk or by using the phone in the simulator.
- > The mezzanine in the simulator area is one-way traffic and will also be used to go to both FTD's on the ground floor via the stairs at the end of the hall on the 1st floor.
- > Please remain in your (de)briefing room after reporting a simulator malfunction, or during a coffee break.
- > For any issues with the simulators please give our technical staff sufficient space.
- > If needed bring your own protective gear



**MAX 2
Persons**

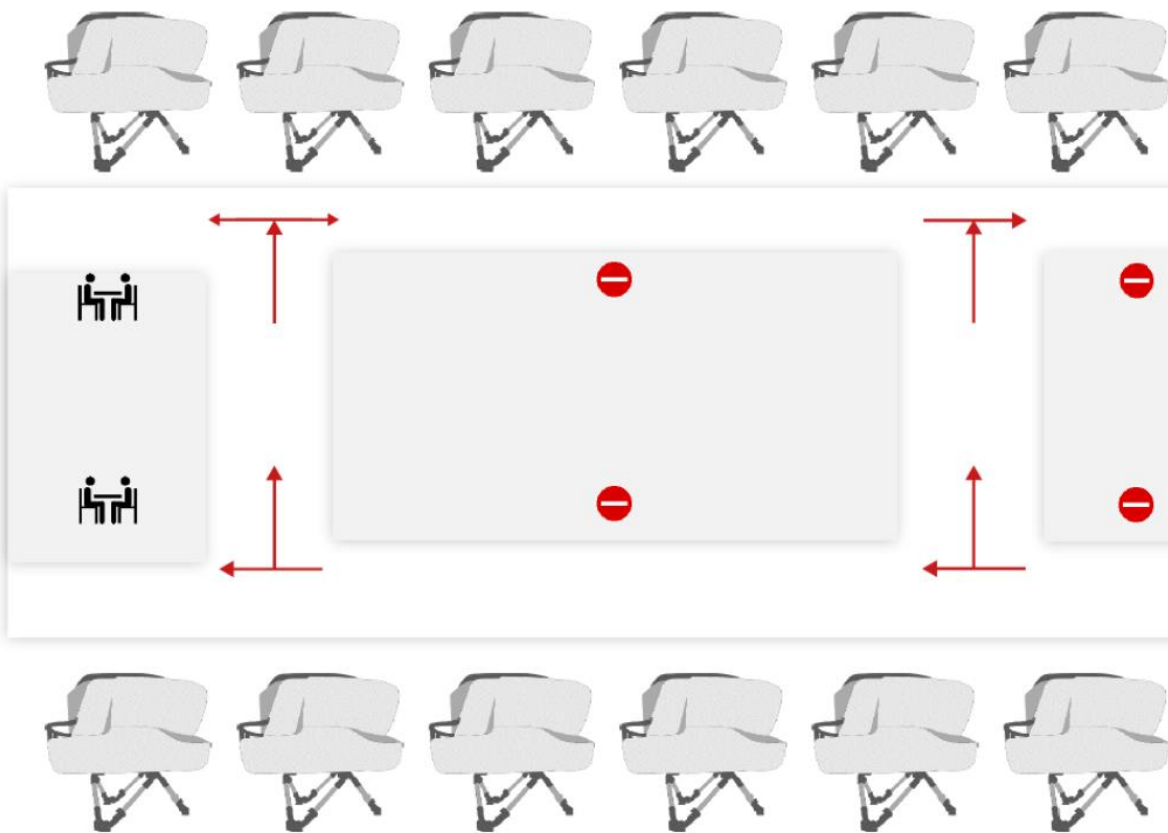


1.5 M

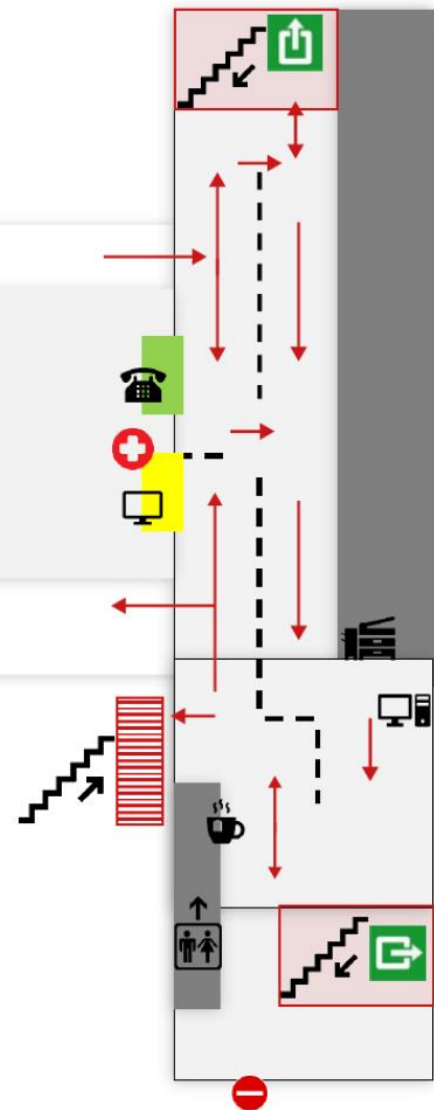


Thank you for your continued support and we look forward to welcoming you at FSC!

FSC Floorplan



1st Floor



2nd Floor

